



Empowered lives.
Resilient nations.

UNDP Technical Assistance on Data

Gonzalo Pizarro
Sustainable Development Cluster
Bureau for Policy and Programme Support
United Nations Development Programme (UNDP)



- Co-chair of the UNDG-LAC Sustainable Development Goals Inter Agency Working Group
- Member of the Inter Agency Working Group on Data for Agenda 2030 in LAC.

- Support to production of VNRs and SDG Reports
- Data Platforms: SIGOB. (Panama, DR, Paraguay)
- Support to the Gender Data Groups at the Statistical Conference of the Americas.
- Greening the MPI
- Gender and environment
- Administrative registry data use support
- Citizen security data support

- Custodian of 5 SDG Indicators: 16.6.2, 16.7.1, 16.7.2, 17.15.1, and 17.16.1.
- Support to 3 SDG Indicators. 1.2.2, 5.2.1, 5.2.2



MAPS



MAINSTREAMING

- **Landing the SDG agenda at the national and local levels:** integration into national and sub-national plans for development; and into budget allocations



ACCELERATION

- **Focus on priority areas** defined by respective countries
- Support an **integrated approach**, including synergies and trade-offs
- **Bottlenecks assessment**, financing and partnerships, and measurement



POLICY SUPPORT

- **Support – tools, solutions, good practices, skills and experience - from respective UN agencies to countries**, which should be made available at a low cost in a timely manner



Empowered lives.
Resilient nations.



MAPS Missions: what are they?



*Empowered lives.
Resilient nations.*

MAPS Missions: UN's contribution to implement the MAPS approach; one week missions, with in-depth analytics drawing on expertise from across UN agencies and other partners

Objective is to provide integrated policy support to countries on SDG implementation

Usual **outputs** include a national SDG implementation roadmap and/or UNCT strategy to support country government

Missions are **customized** to country context and demand



MAPS Missions: Processes



empowered lives.
resilient nations.

MAPS Missions in LAC

Completed:

- Jamaica
- Trinidad and Tobago,
- Aruba
- El Salvador
- Dominican Republic
- Haiti
- Brazil
- Curacao

Pipeline:

- Saint Lucia

Roadmaps for SDG Implementation

The image shows a map of Latin America and the Caribbean with several circular icons representing the Sustainable Development Goals (SDGs) overlaid on it. Below the map are four roadmaps for SDG implementation:

- A ROADMAP FOR SDG IMPLEMENTATION IN JAMAICA** (January 2017)
- Trinidad and Tobago Roadmap for SDG Implementation** (April 2017)
- A Roadmap for SDG Implementation in Aruba** (May 2017)
- La implementación de la Agenda 2030 en El Salvador** (Misión MAPS Naciones Unidas en El Salvador, 27 de junio de 2017)

MAPS Missions Focus



Empowered lives.
Resilient nations.

1. Advocacy

2. Alignment

3. Institutional Coordination Mechanism

4. Accelerators

5. Public Engagement

6. Development Financing Solutions

7. Data, Indicators, Statistics

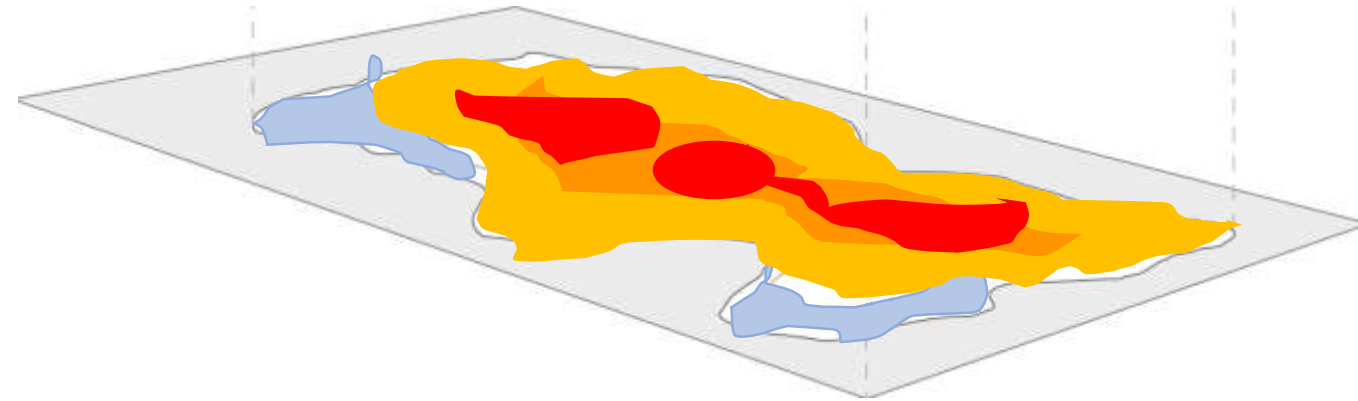
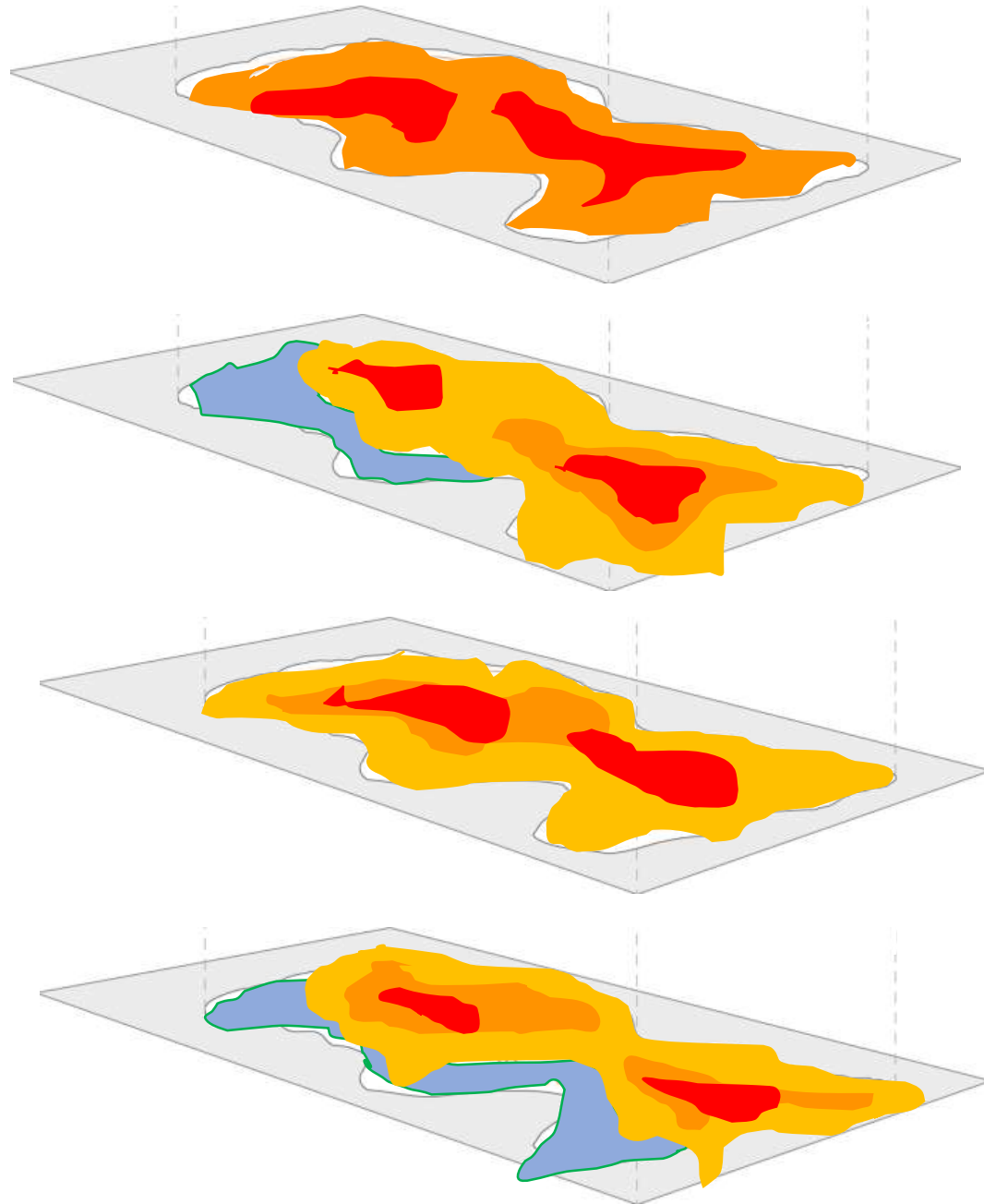
8. Risks Analysis



Al ir de los **promedios nacionales** a **los contextos locales**, emergen superposiciones de problemas



*Empowered lives.
Resilient nations.*



Hotspot ODS

Intersección de múltiples brechas ODS, exclusiones y privaciones

Combo de nutrición infantil

- En promedio 8 de cada 10 personas son pobres en la región Lempa de Honduras

Lempa presenta el Índice de Destitución Infantil Multidimensional (IDIM) mas elevado de Honduras

Figura 3.2.27B. Incidencia de IDIM por departamento, Personas de 0 a 17 años, Honduras, 2011/2012

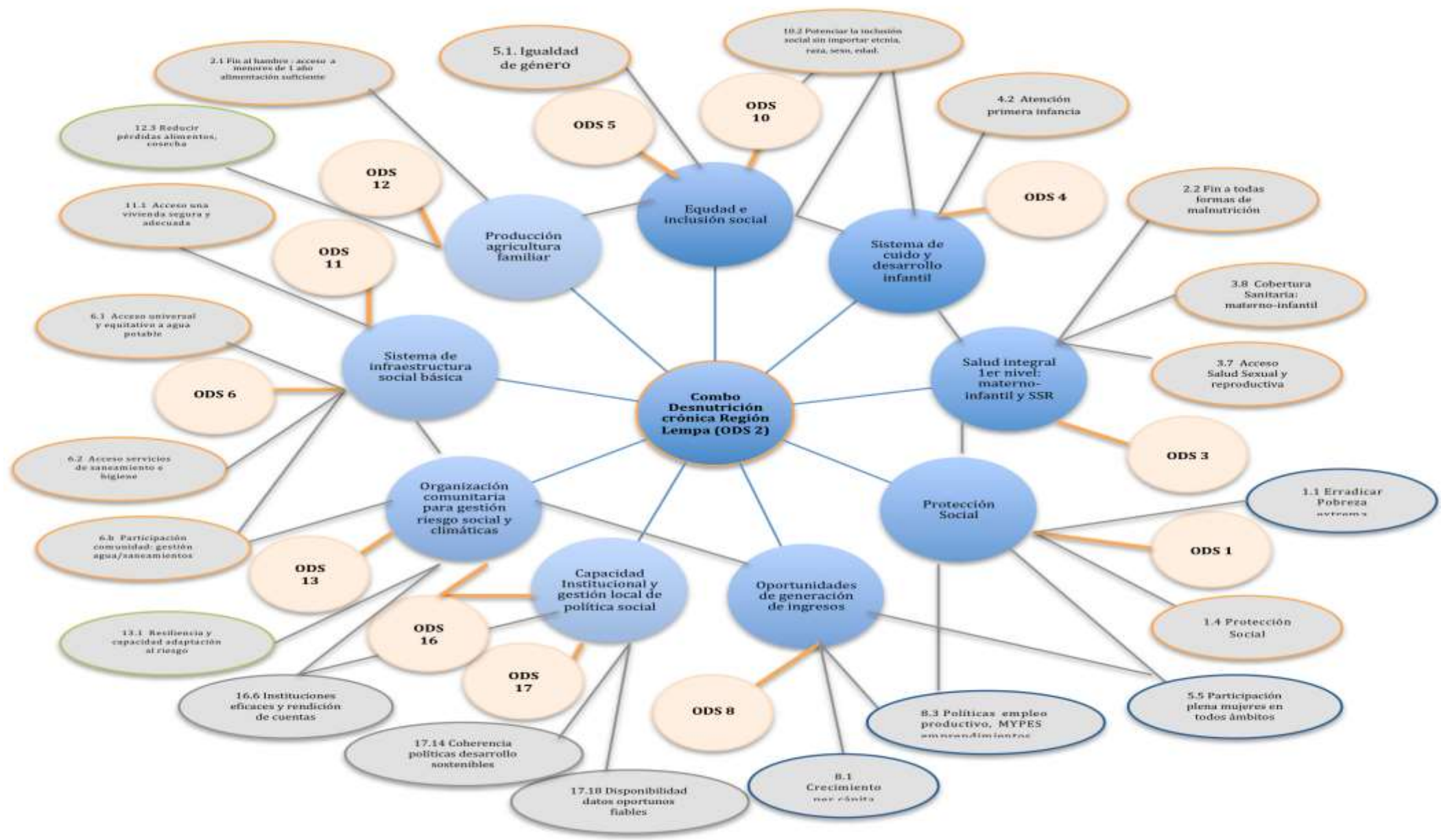


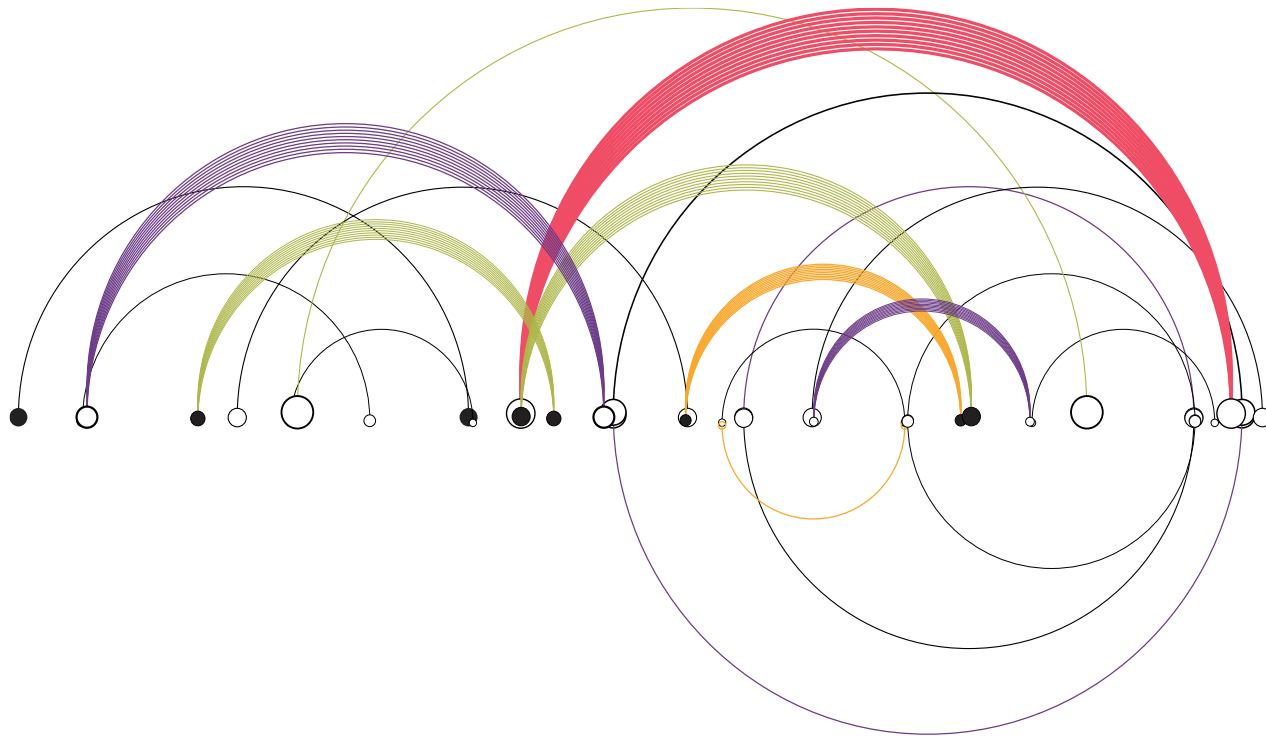
Fuente: Elaboración propia, con base en INE ENDESA 2011/ 2012



owered lives.
Resilient nations.

Municipio	Linea de Pobreza*	Desnutrición**	Z normalizado	Umbral
Camasca	86.02	38.91	0.622281	Alto
Colomoncagua	89.70	58.39	0.770291	crítico
Concepción	87.05	44.32	0.634464	Alto
Magdalena	83.97	34.81	0.584336	Medio Alto
San Antonio	83.21	38.82	0.615012	Alto
San Marcos de La Sierra	90.80	87.25	0.998787	crítico
Santa Lucía	84.12	50.51	0.711971	crítico
Candelaria	88.52	51.28	0.700029	crítico
Cololaca	90.19	55.33	0.770088	crítico
Erandique	91.68	61.64	0.786870	crítico
Gualcince	93.06	57.99	0.815768	crítico
Guarita	90.80	40.62	0.648025	Alto
La Virtud	91.66	34.47	0.625105	Alto
Mapulaca	91.70	48.43	0.676798	Alto
Piraera	93.38	53.36	0.791952	crítico
San Andrés	93.71	69.05	0.921385	crítico
San Francisco	93.32	58.88	0.779436	crítico
San Juan Guarita	91.66	45.54	0.669410	Alto
Santa Cruz	93.27	74.61	0.887692	Crítico
Tambla	89.63	49.45	0.677158	Alto
Tomalá	91.66	56.47	0.674795	Alto
Valladolid	90.94	41.29	0.621233	Alto
Virginia	90.41	41.84	0.636913	Alto





11 -12 October, Montevideo

29-30 October, Antigua

1-2 November, Kingston





www.latinamerica.undp.org