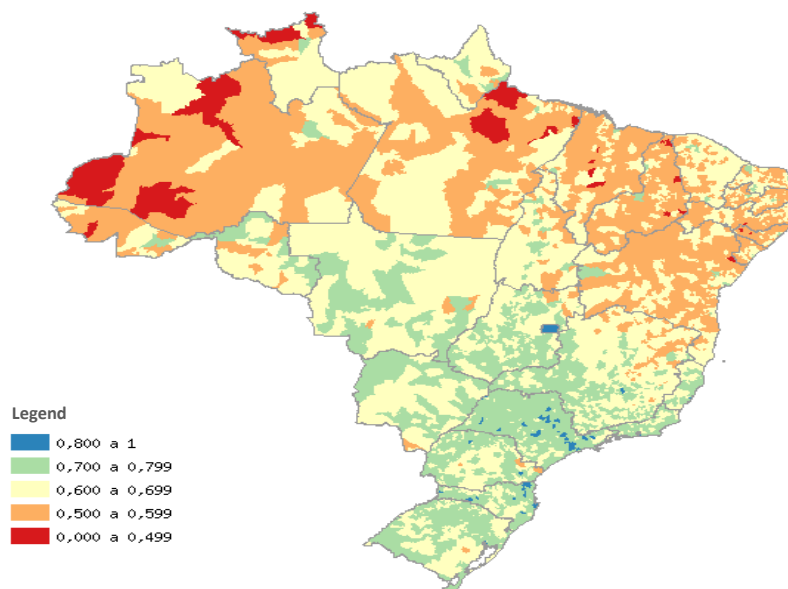
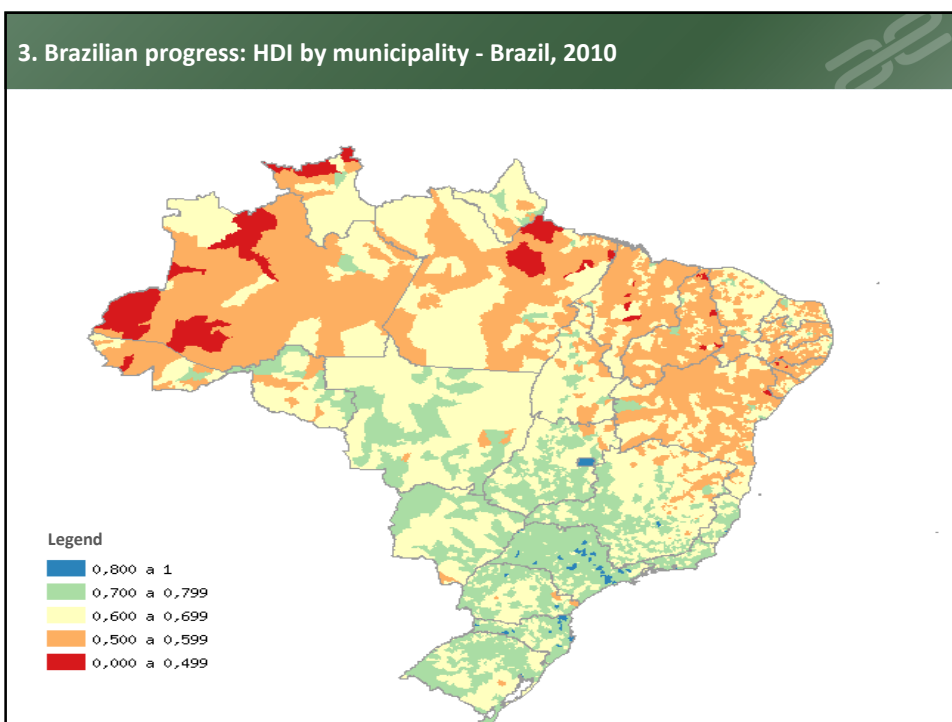
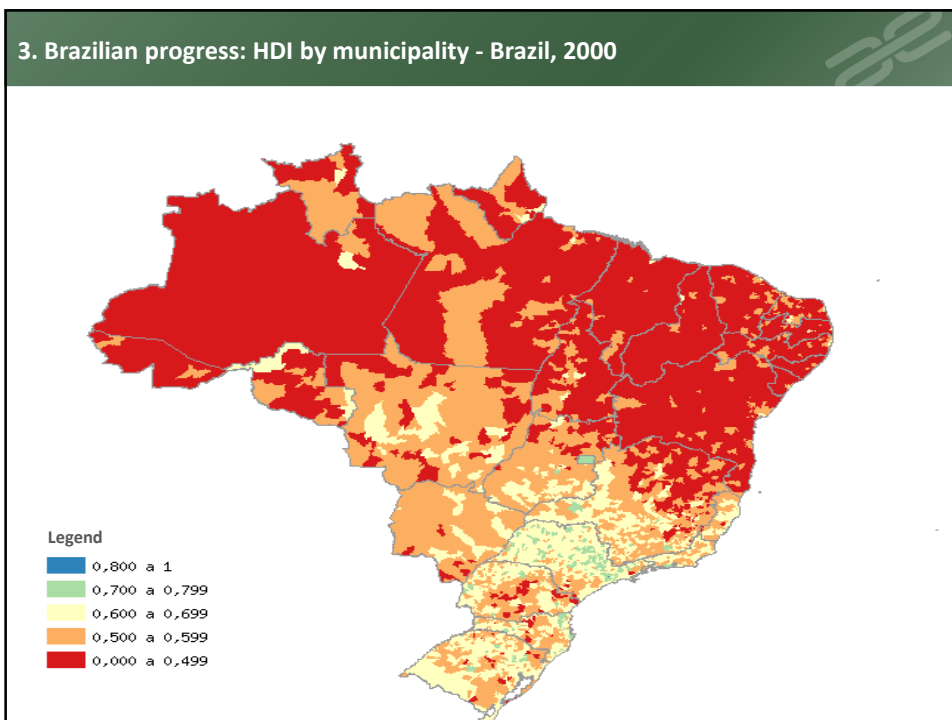


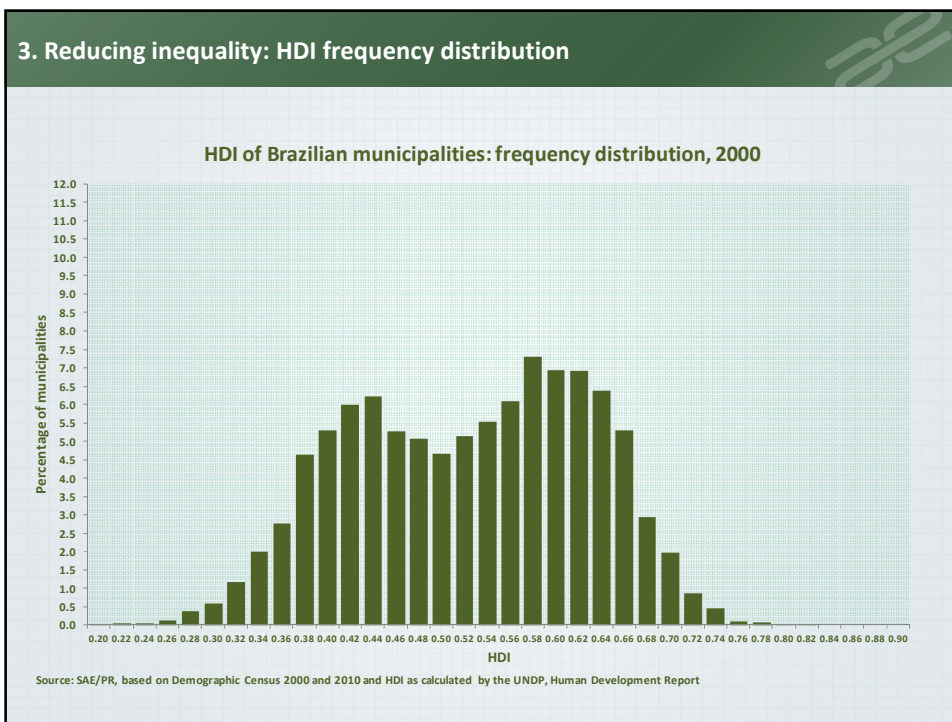
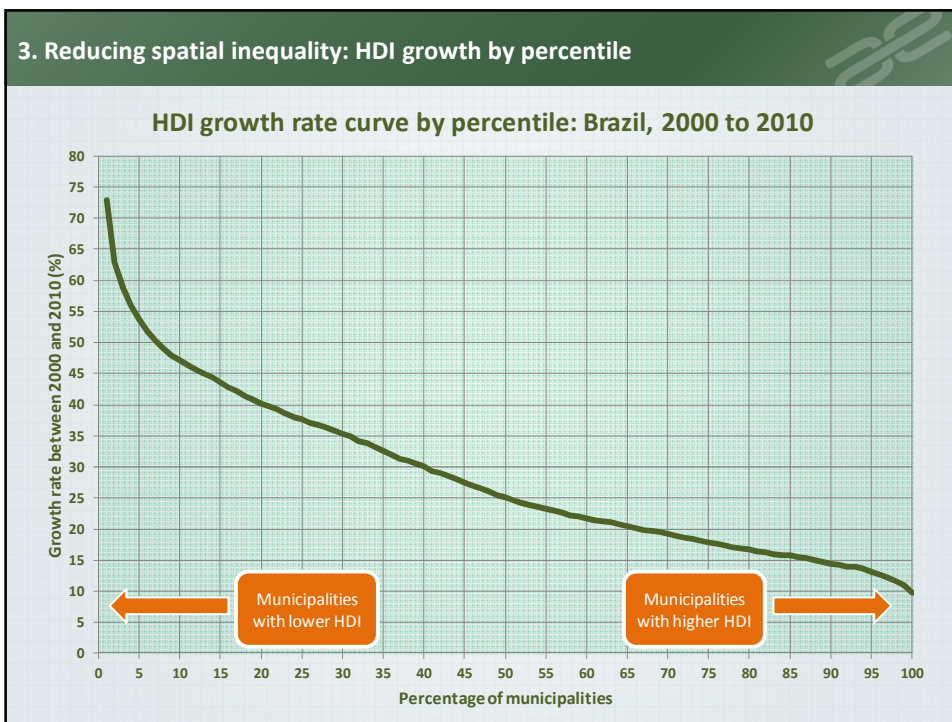
1. Brazilian spatial disparities: HDI bimodal distribution

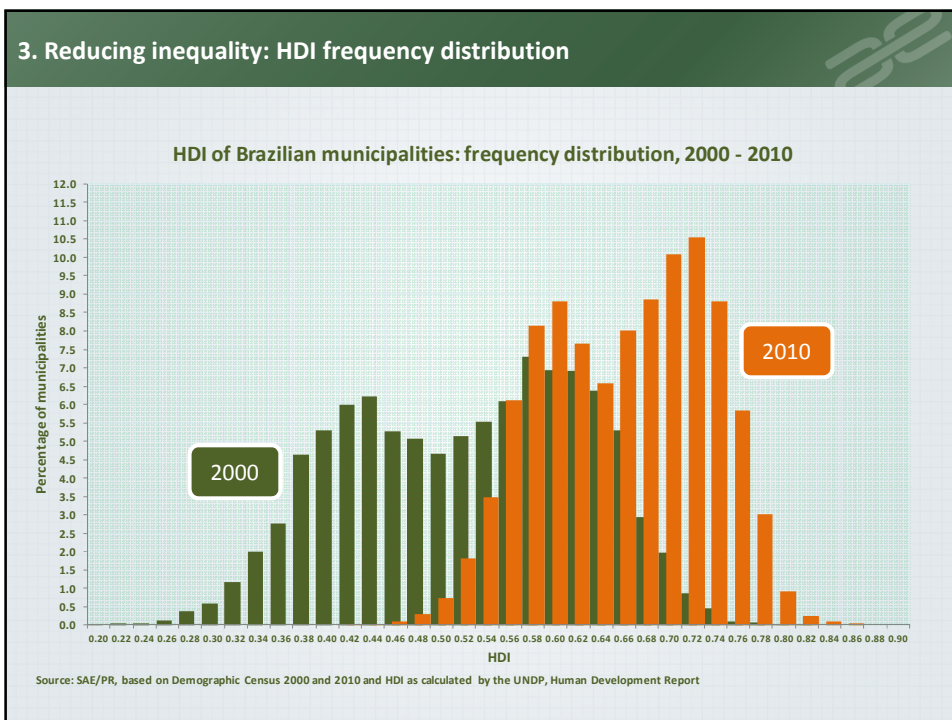
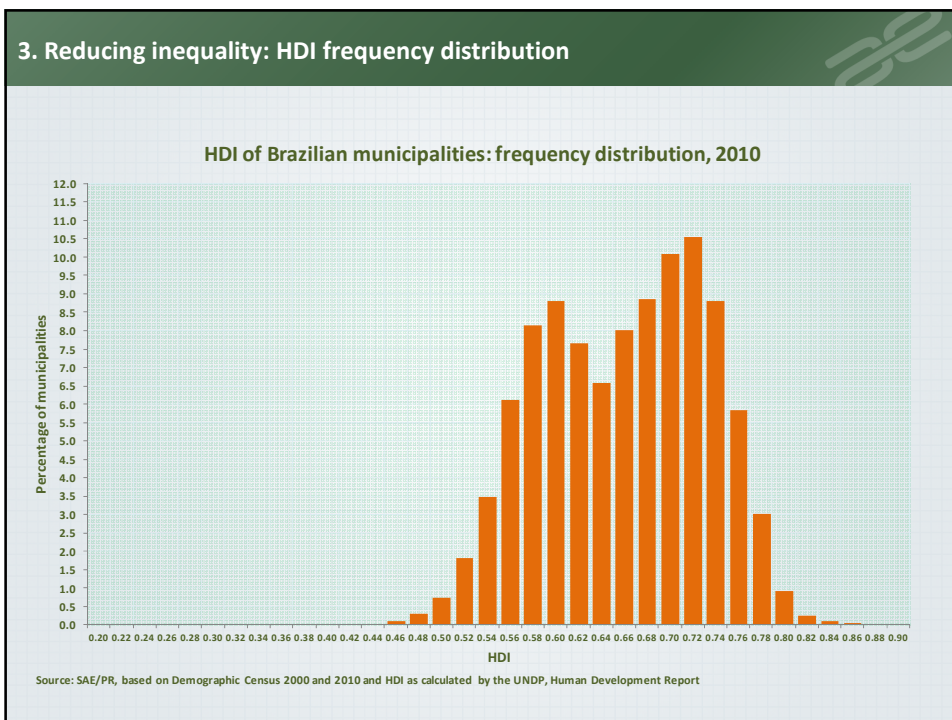


2. Why spatial inequality is so important for development

- Development as a result of local collective action
- Local protagonism
- Advantages of local development
 - ✓ Common knowledge of local specificities
 - ✓ Mutual acquaintance promote trust and solidarity
 - ✓ Logistic lower cost
- Spatial inequality: external solidarity

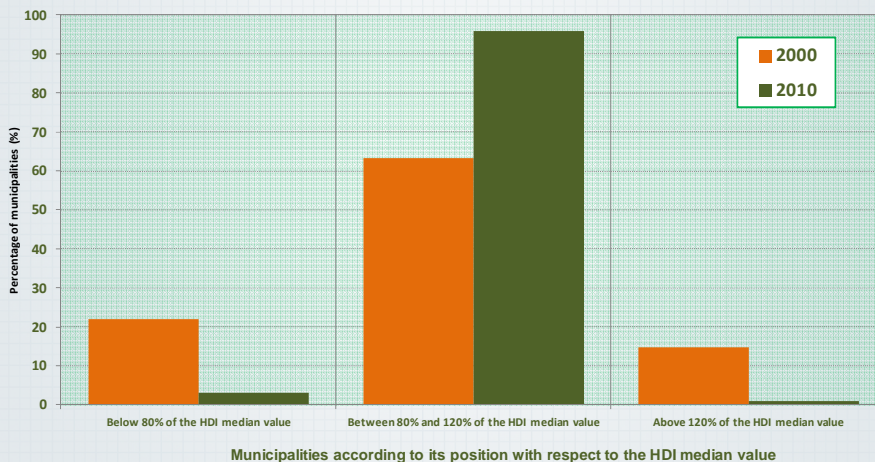






3. Reducing inequality: evolution of the HDI distribution around the median

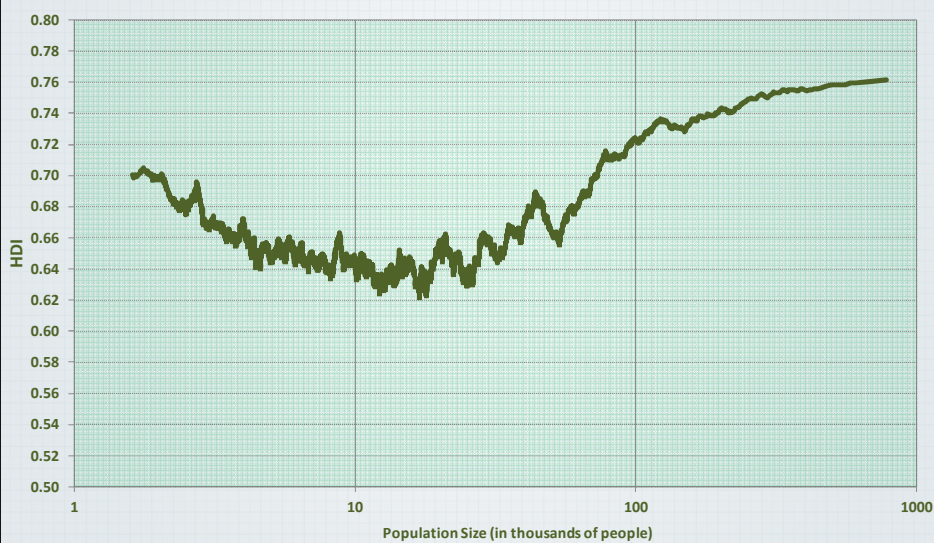
Distribution of Brazilian municipalities with respect to the HDI median value, 2000 and 2010



Source: SAE/PR, based on Demographic Census 2000 and 2010 and HDI as calculated by the UNDP, Human Development Report

3. Differentials among municipalities with distinct population sizes

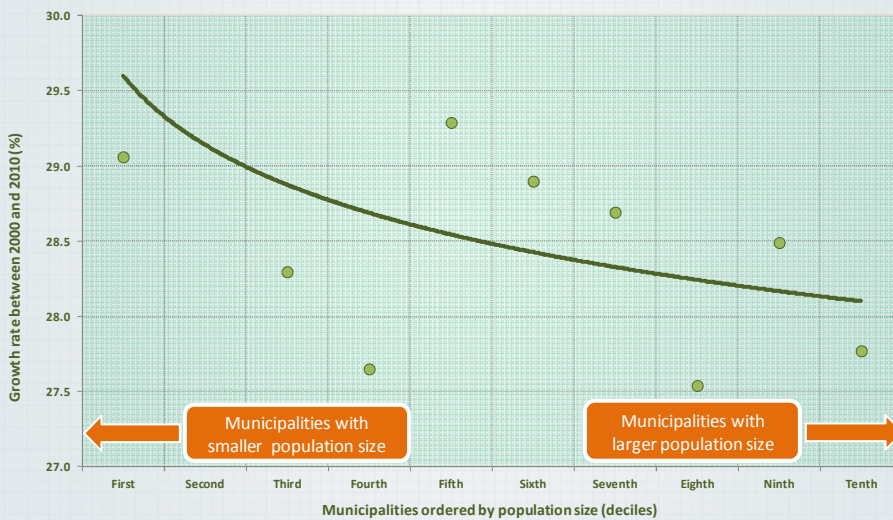
HDI according to municipality population, Brazil, 2010



Source: SAE/PR, based on Demographic Census 2000 and 2010 and HDI as calculated by the UNDP, Human Development Report

3. Equating differentials among municipalities with different population sizes

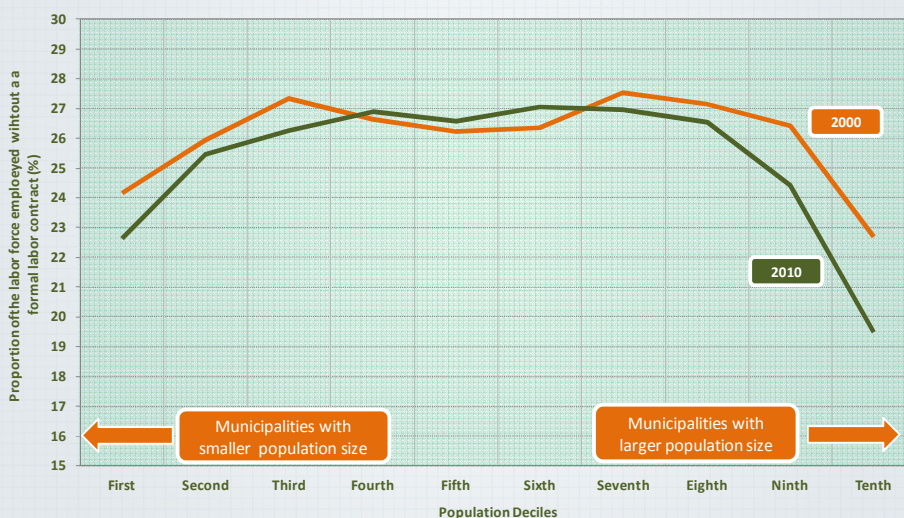
Growth rate in HDI by municipal population: Brazil, 2000-10



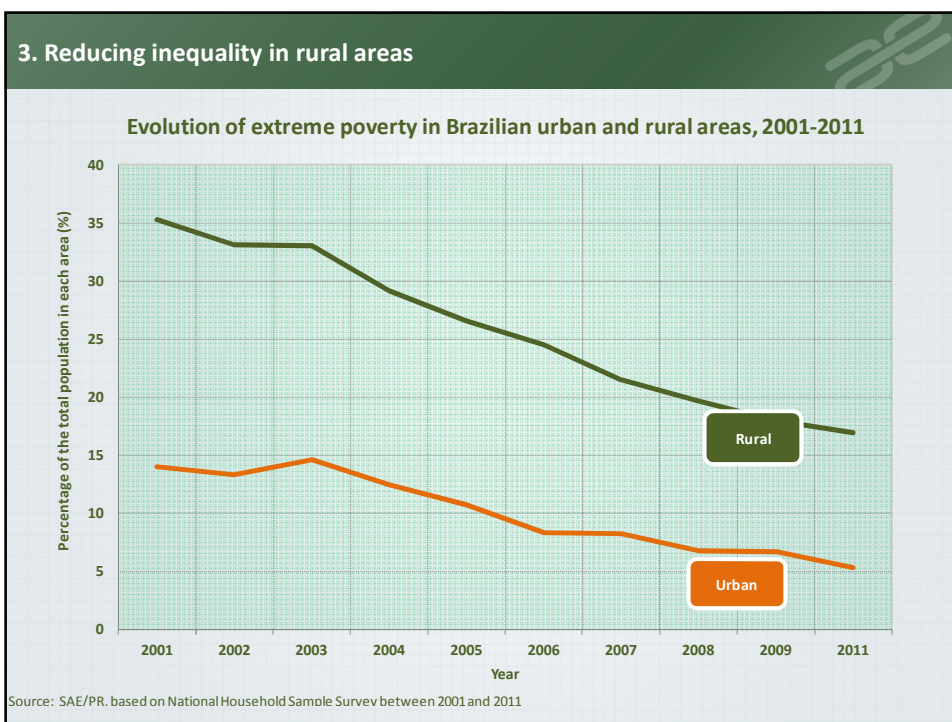
Source: SAE/PR, based on Demographic Census 2000 and 2010 and HDI as calculated by the UNDP, Human Development Report

3. Differentials in informal labor relations among municipalities with different population sizes

Degree of informality by population size of municipality, 2000 e 2010

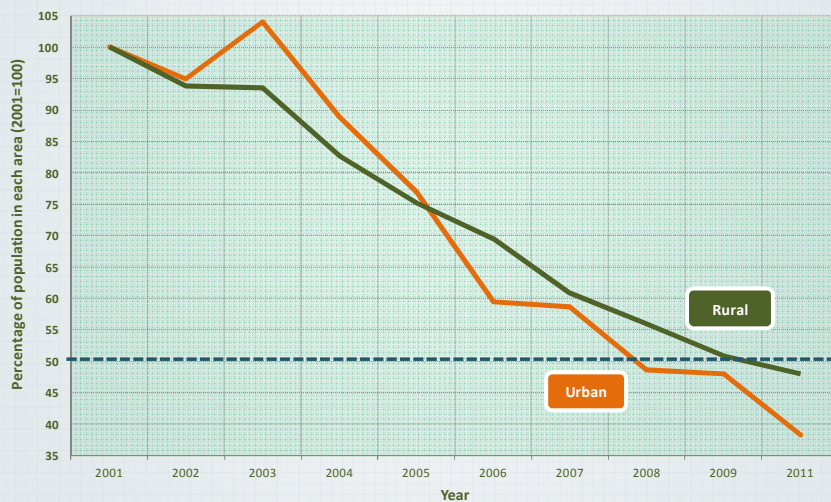


Source: SAE/PR, based on Demographic Census 2000 and 2010



3. Reducing inequality in rural areas

Evolution of extreme poverty in Brazilian urban and rural areas, 2001-2011



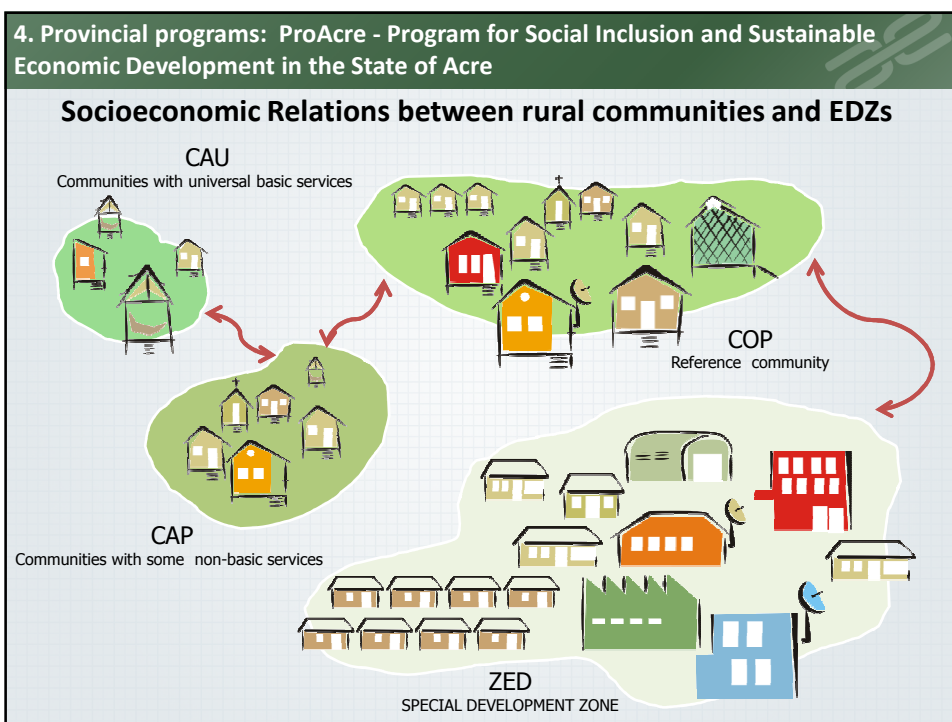
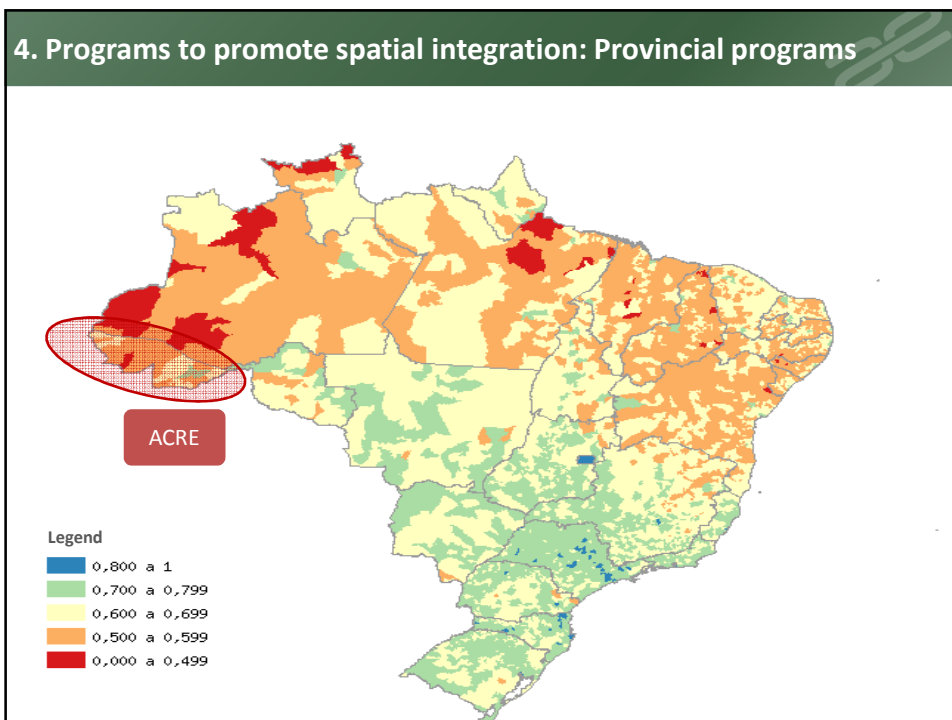
Source: SAE/PR, based on National Household Sample Survey between 2001 and 2011

4. Programs to promote spatial integration: Federal programs

Brazilian 120 "TERRITÓRIOS DA CIDADANIA"

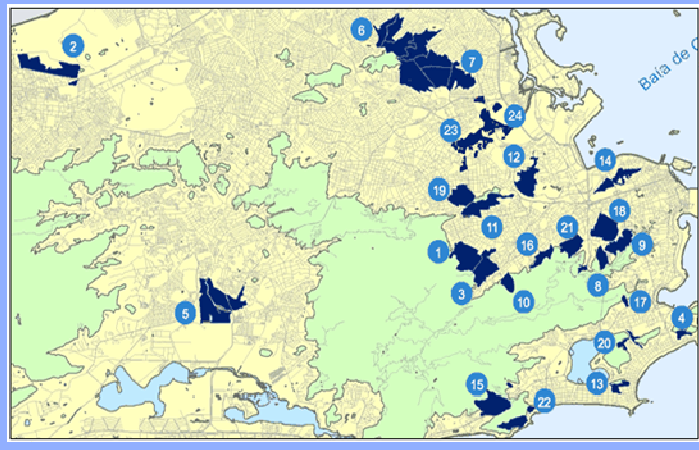


■ Municipalities covered by the Program



4. Programs to promote spatial integration: Local programs

Rio de Janeiro Social UPP Program



33 UPPs already implemented

1,5 million beneficiaries

Goal: 40 UPPs implemented up to 2014.

4. Programs to promote spatial integration: Federal programs

Program	Objective
Ministério da Integração Nacional - MI	
Programa de Desenvolvimento Regional, Territorial Sustentável e Economia Solidária (antigo PROMESO) Esse programa se subdivide nas seguintes ações:	Formular e implementar os marcos legais das Políticas Nacionais de Desenvolvimento Regional e de Ordenamento Territorial, contribuindo para a redução das desigualdades regionais e ocupação racional do território.
PNDR - Política Nacional de Desenvolvimento Regional	Reduzir as desigualdades entre as regiões brasileiras e a promover a equidade no acesso a oportunidades de desenvolvimento, estimulando o desenvolvimento regional em múltiplas escalas, com foco particular nos territórios selecionados e de ação prioritária.
PAPL - Política Nacional para APLs	Estruturar e adensar arranjos produtivos locais e cadeias produtivas nos territórios, por meio da dinamização econômica e da inclusão produtiva.
ZEE - Política de Implementação do Zoneamento Ecológico Econômico	Elaborar e implementar o Zoneamento Ecológico-Econômico para a promoção do ordenamento e da gestão ambiental territorial.
RIDES - Regiões Integradas de Desenvolvimento	Articular e harmonizar as ações administrativas da União, dos Estados e dos Municípios para a promoção de projetos que visem à dinamização econômica de territórios de baixo desenvolvimento
Ministério do Desenvolvimento Agrário – MDA	
PTC - Programa Territórios da Cidadania	Implementar ações de organização e gestão territorial; inclusão produtiva; infraestrutura rural e gestão social.
PRONAT - Programa Nacional de Desenvolvimento Sustentável de Territórios Rurais	Acelerar processos de desenvolvimento locais e sub-regionais que ampliem as oportunidades de geração de renda de forma descentralizada e sustentável, articulados a redes de apoio e cooperação solidária.

