



The World Environment Situation Room

“The UNEP data, information and knowledge platform”

Francesco Gaetani, PhD / Regional Office for Latin America and the Caribbean / UNEP

Aims and description

- The World Environment Situation Room (WESR) is UNEP on-line data, information and knowledge platform.
- It enables users to find, visualize, interrogate, access, link and download data, information and knowledge products regarding the world environment situation, including in near real-time.
- It will take UNEP into the digital age and establish a leadership role on environmental data. WESR will be customized to fulfil UNEP's mandates and fill both an important and unique niche in the emerging digital infrastructure for the planet.
- WESR is transforming data into information and knowledge products and made them available to support the science – policy process toward sustainable development. It aims at Harnessing Big Data for the environment, planet, people and places.



WESR supports UNEP's functional needs...



Assessments

GEO, Emissions Gap Report, IPCC, IPBES, Regional Seas Quality Status Report,...



Foresights

SDG, Foresight Briefs, emerging environmental issues



Monitoring

Global Environmental Monitoring Systems on Water
Air Quality Monitoring
Monitoring Land and Biota Systems
Monitoring the Oceans



Divisions

Science, Ecosystems, Law, Economics, Communications, Policy and Programme, Corporate Service, Governance Affairs Office.



Regions

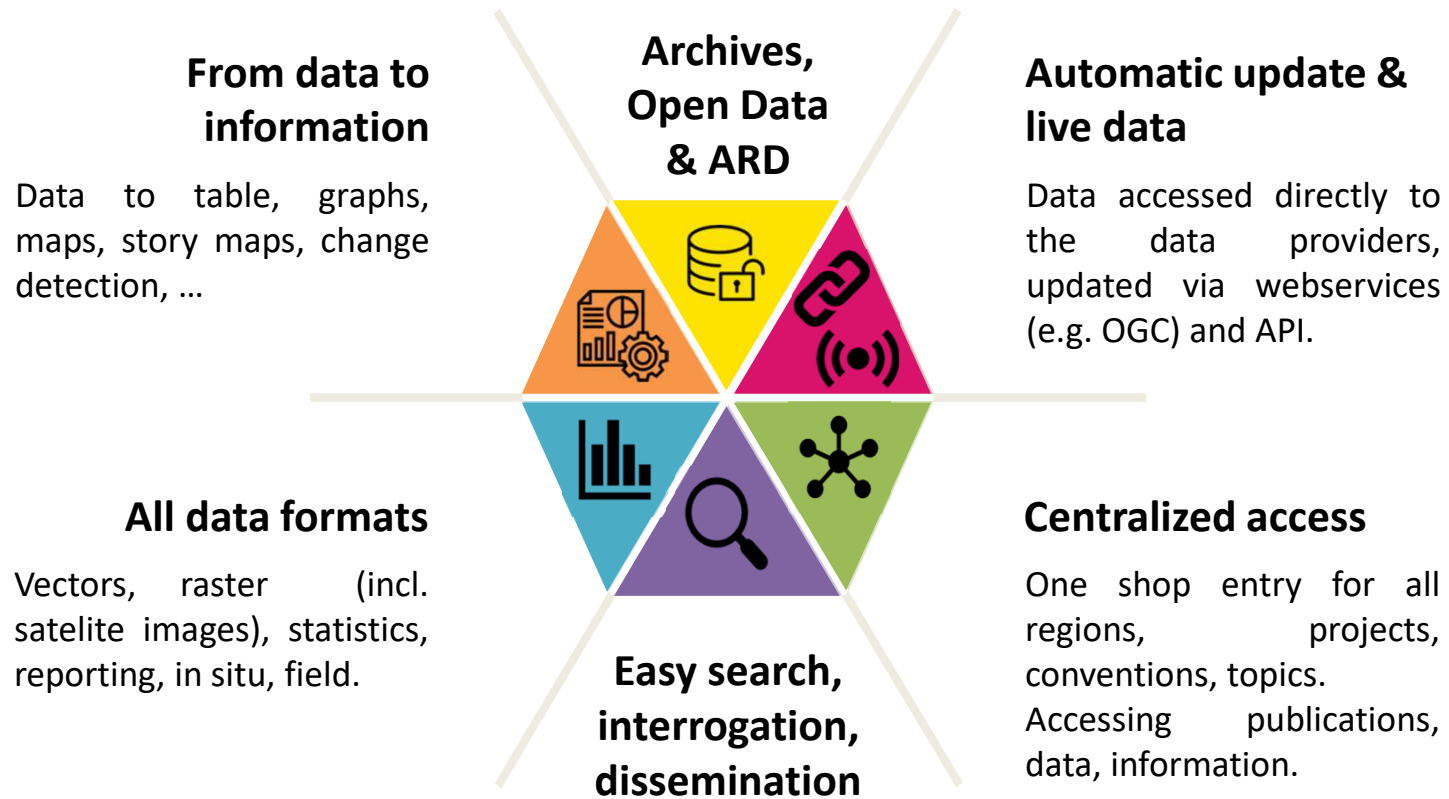
North America, Latin America and the Caribbean, Africa, Europe, Asia & Pacific, Polar.



SDGs & MEAs

SDGs, CBD, Ramsar, Stockholm, Basel, Montreal, UNFCCC, ...

Formats, standards and full interoperability



Designed by PresentationGO.com

Features



QUICK UPDATES AND ACCESS

Using cloud technology



INTERROGATION

User can interrogate and query



VISUALISATION

Display and visualisation of data.
Such as graphs, tables, maps, story maps, dashboards



PROCESSING

Intersection, change detection, trend analysis,...



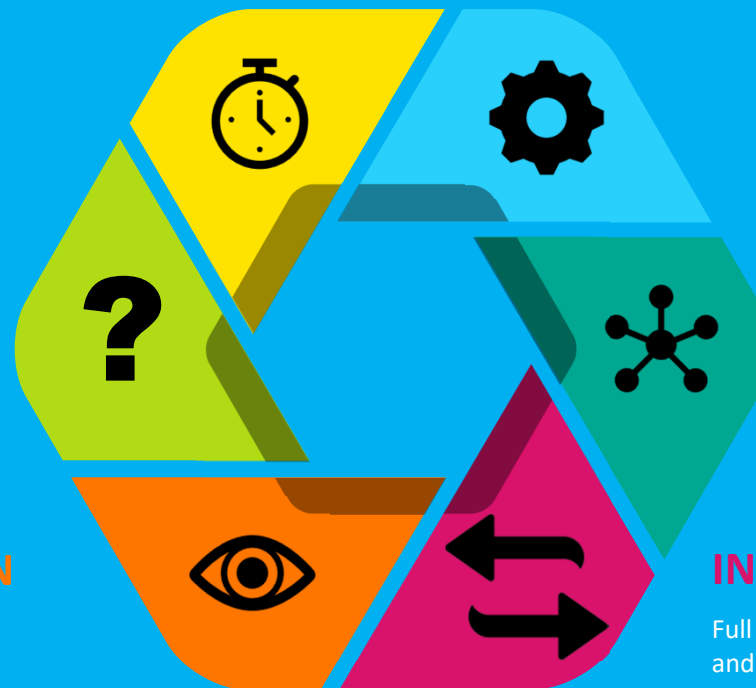
SEARCH

One entry search for data, and publications



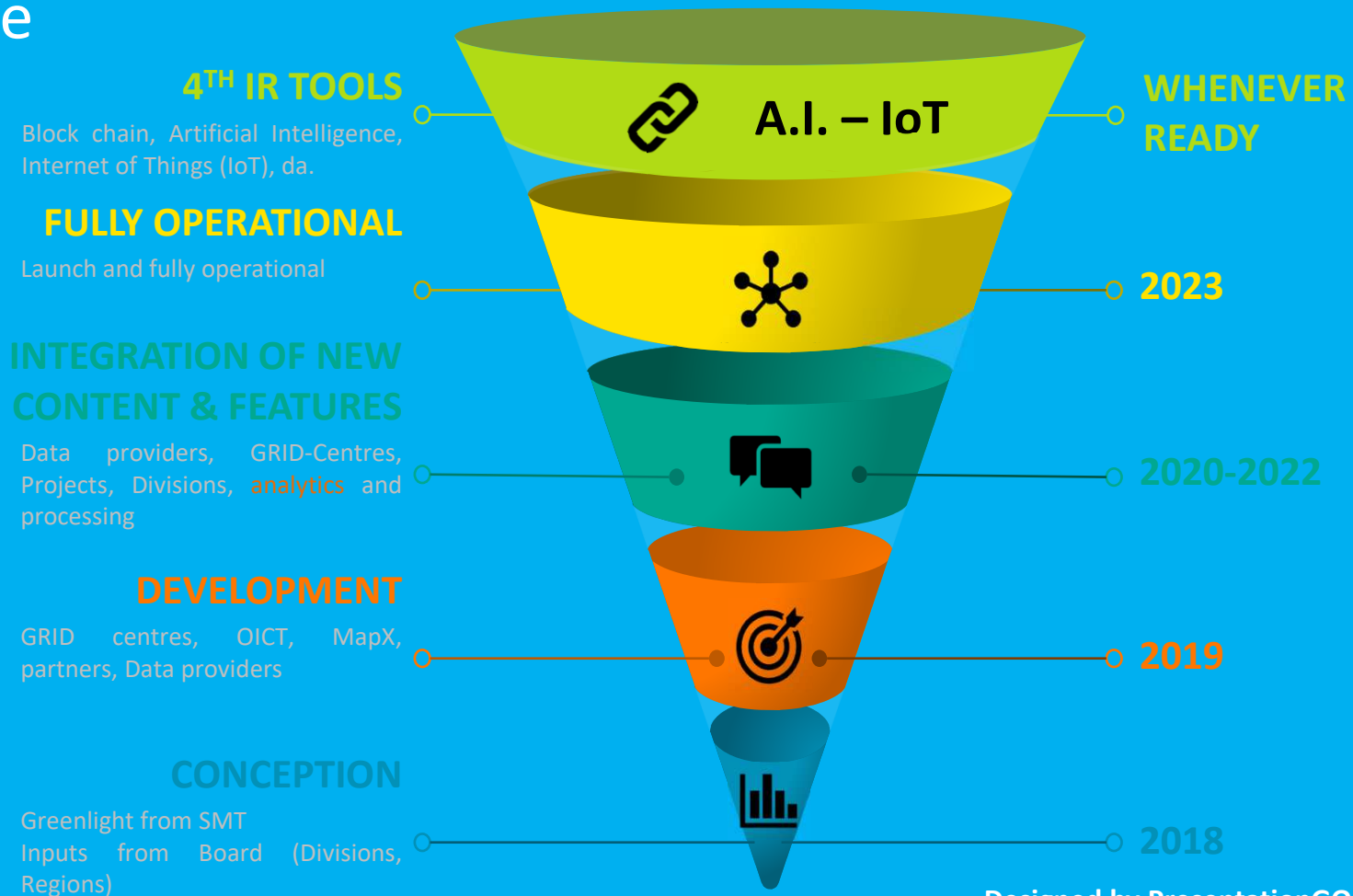
INTEROPERABILITY

Full interoperability using standard format and OGC webservices. Downloads.



Designed by PresentationGO.com

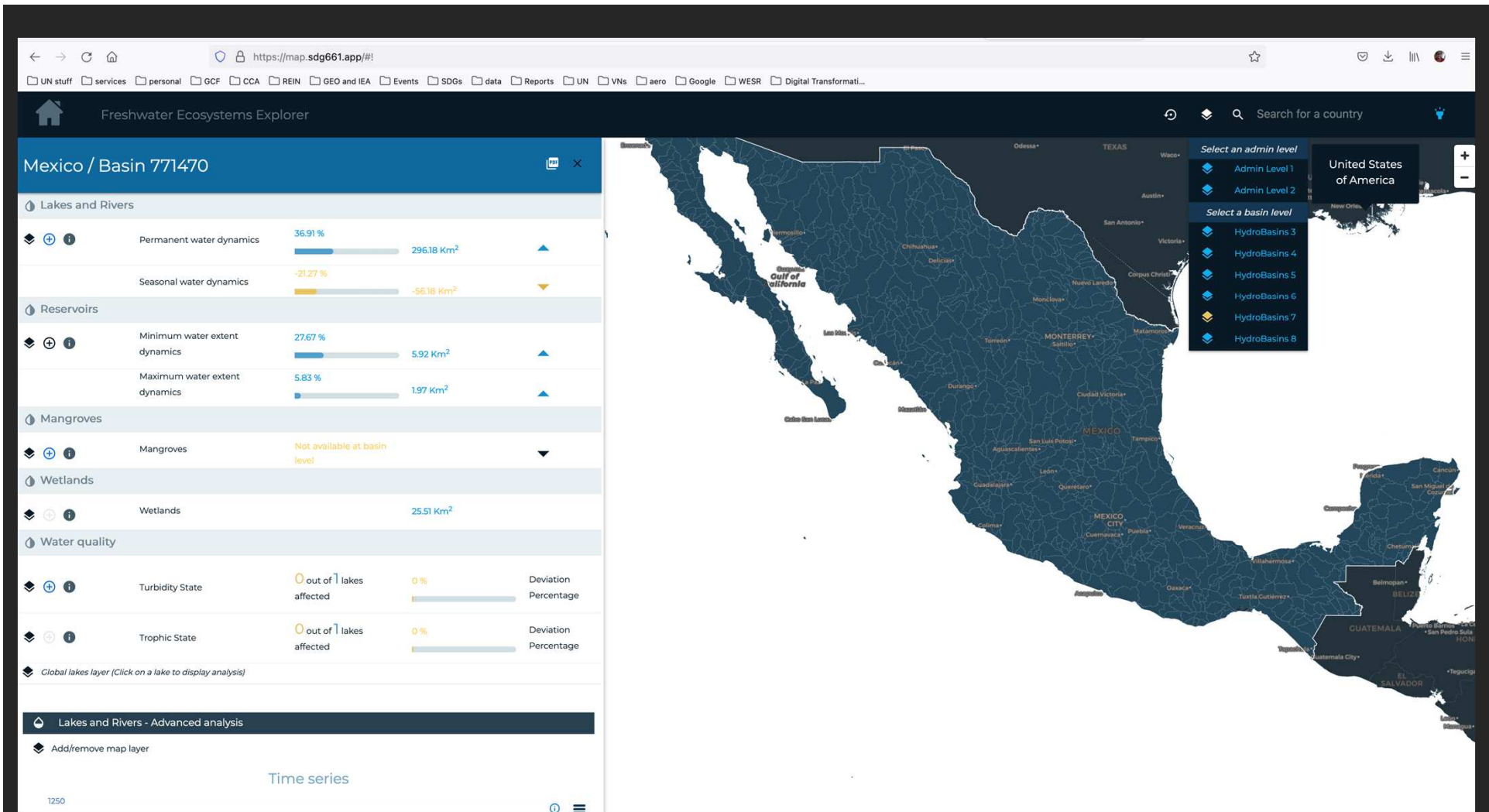
Timeline



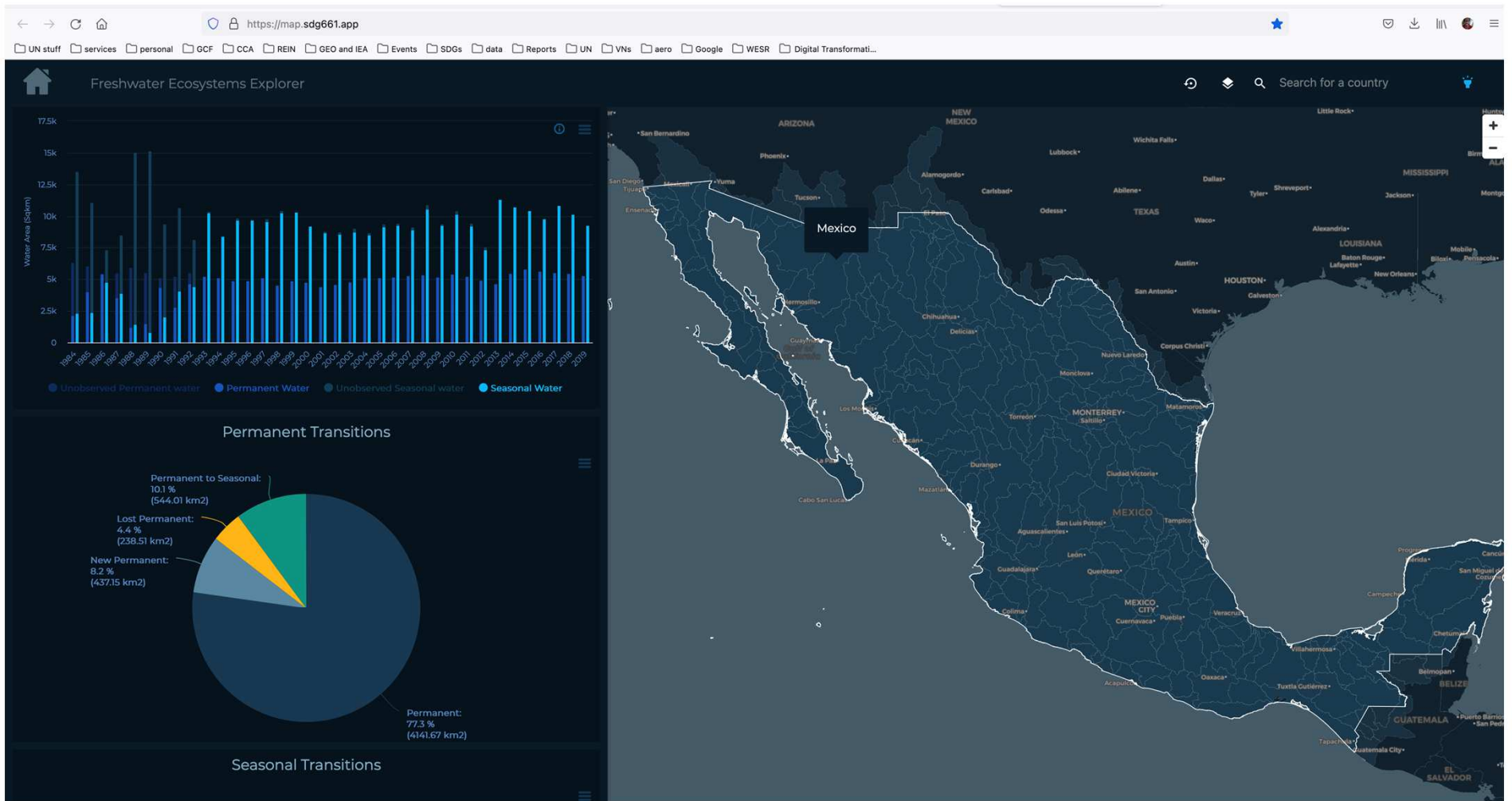
Designed by PresentationGO.com



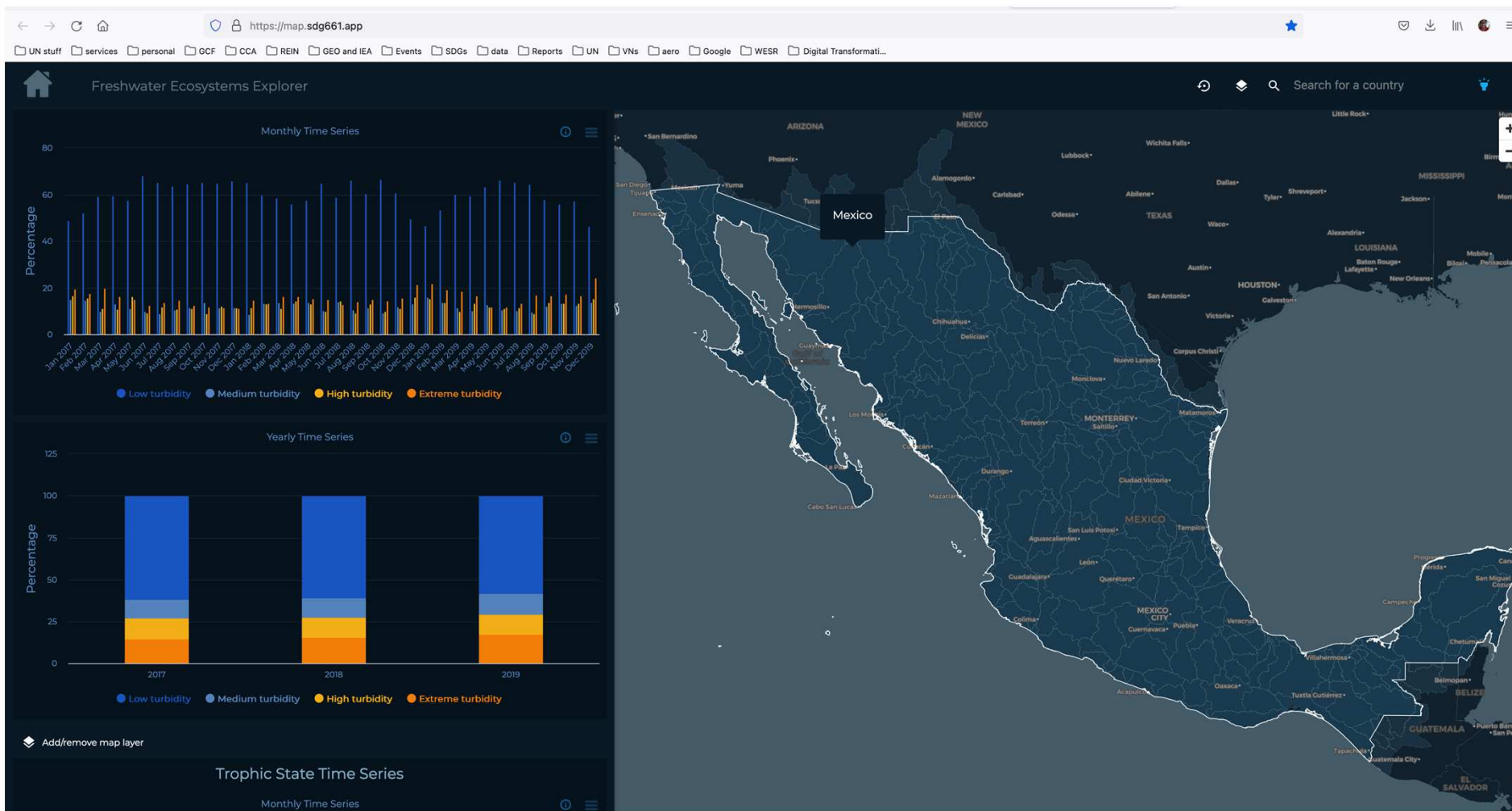
Freshwater Ecosystems Explorer



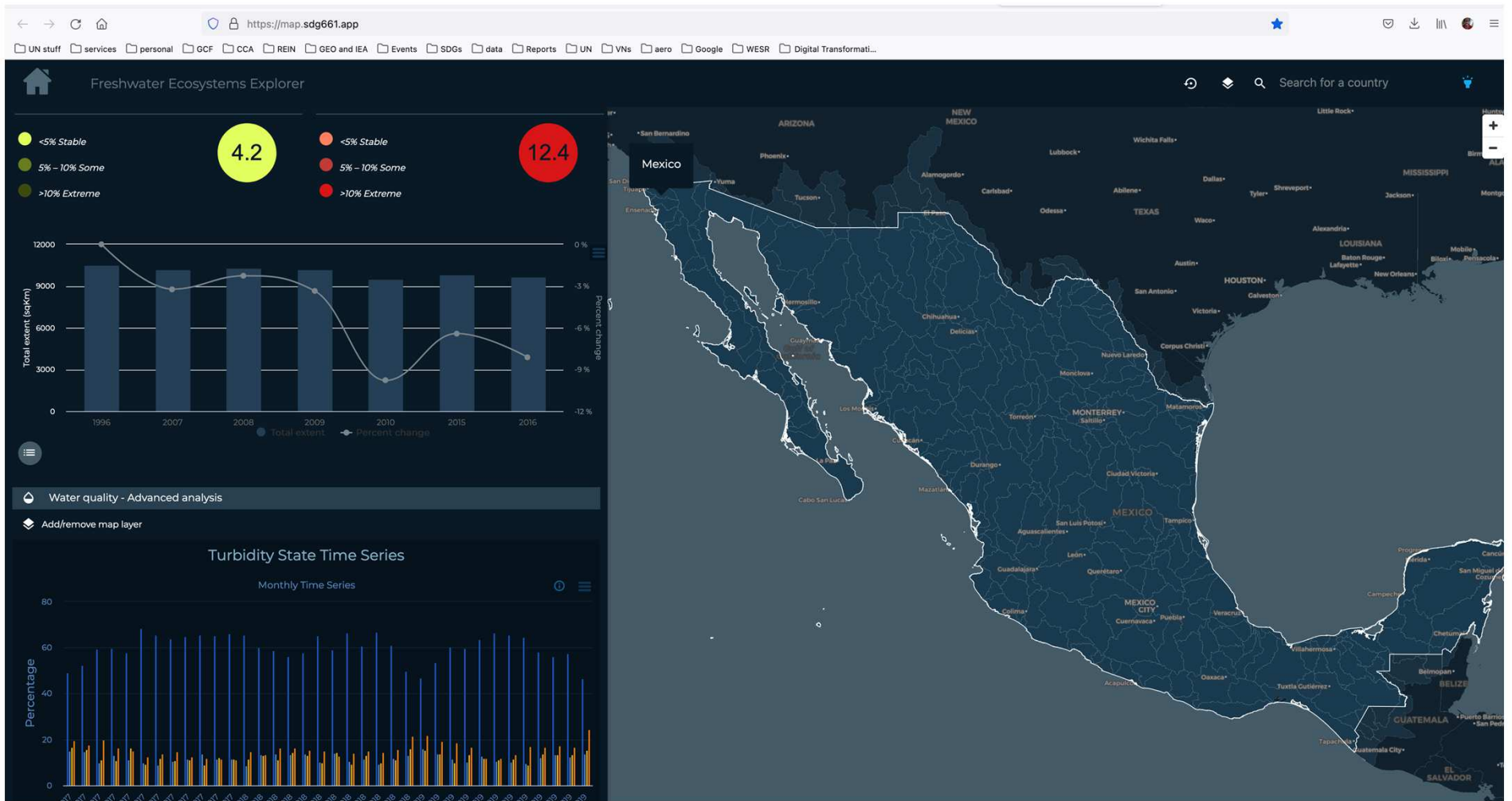
Freshwater Ecosystems Explorer



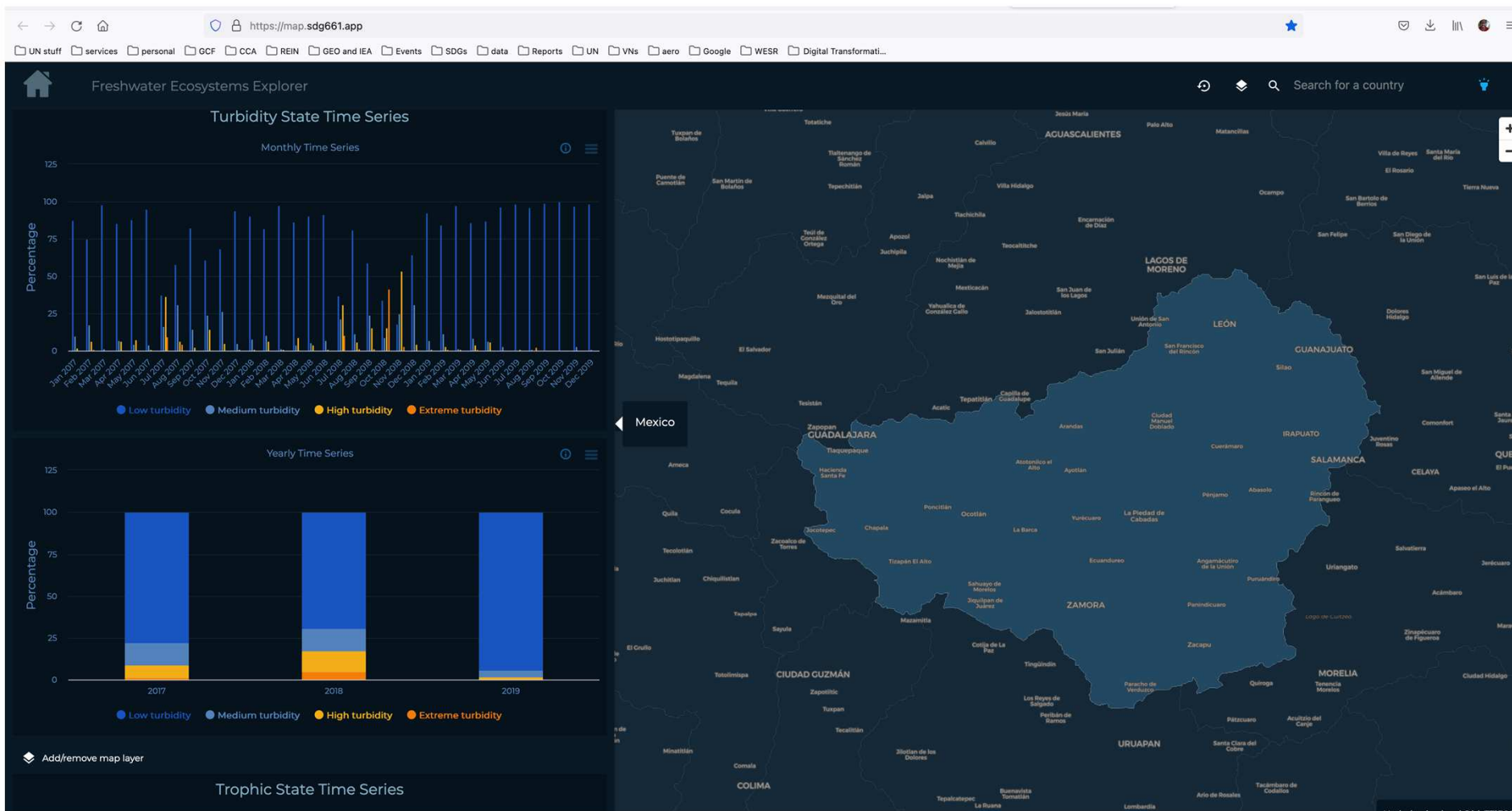
Freshwater Ecosystems Explorer



Freshwater Ecosystems Explorer



Freshwater Ecosystems Explorer



Freshwater Ecosystems Explorer



Thank you

francesco.gaetani@un.org

Oficina para América Latina y el Caribe
Ciudad de Panamá, Panamá
Tel: +(507) 305-3100

www.unep.org